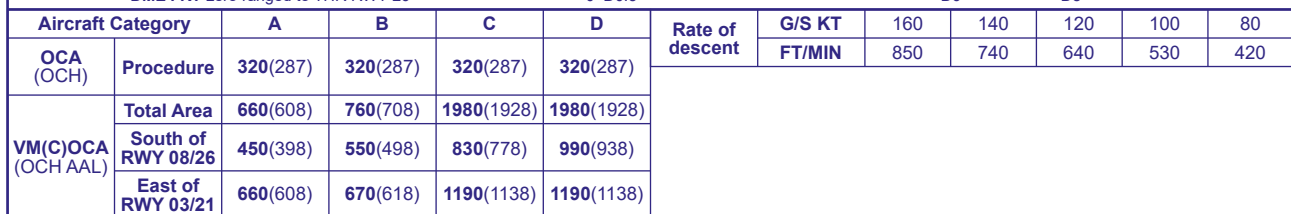


**ISLE OF MAN
LOC/DME
RWY 26
(ACFT CAT A,B,C,D)**

Arrival not below 3000 or MSA whichever is the higher.

FROM OVERHEAD VOR IOM: Descend as required to **3000** inbound to NDB(L) RWY on QDM 079°, then continue as for full procedure.

NOTE 1 Aircraft will normally be required to hold not lower than **3000**.

AD 2-EGNS-8-8